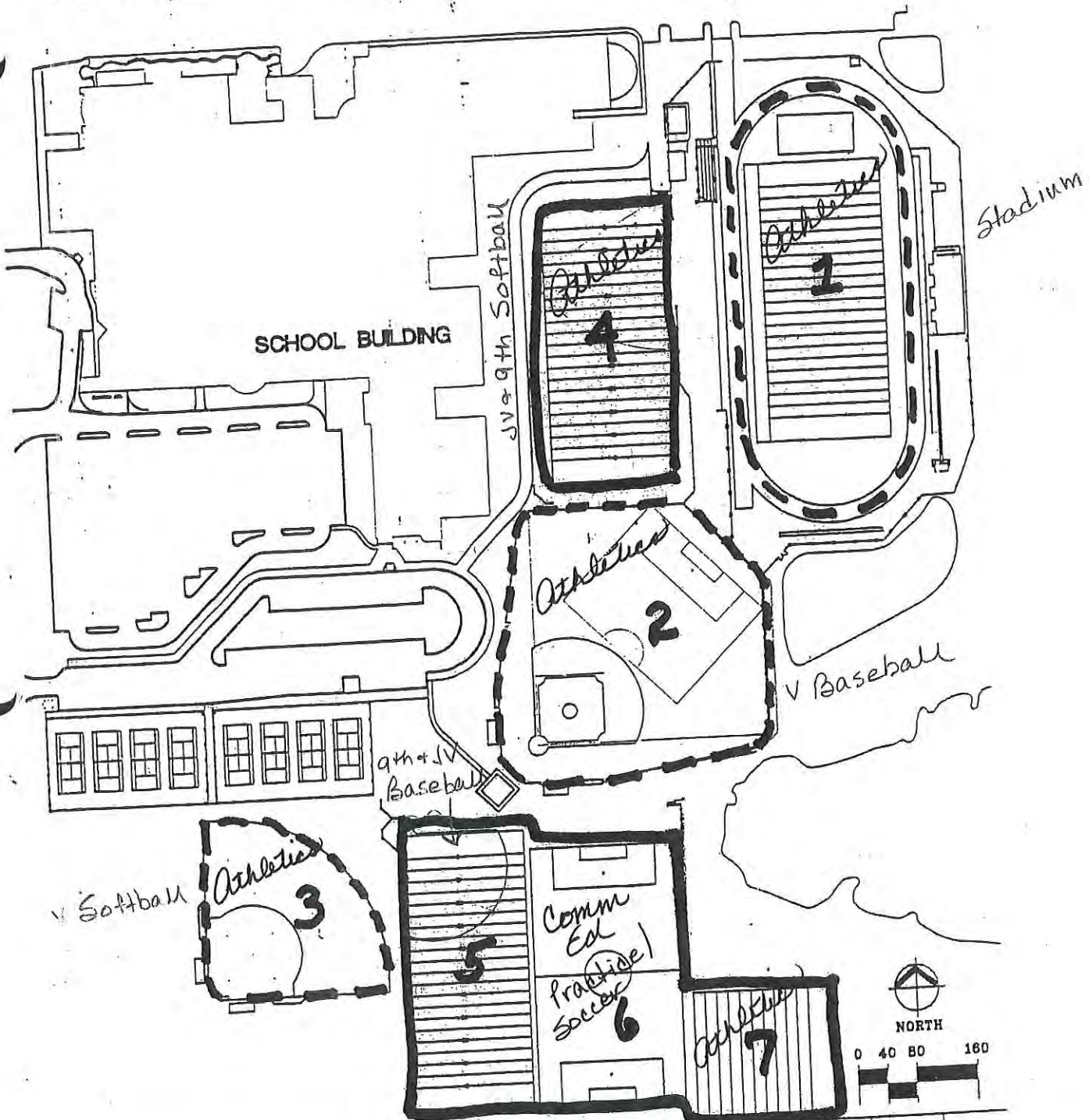


# 1, 2, 3 Game -----



# 4, 5, 6, 7 Practice -----

**JOHNSON HILL AND ASSOCIATES, INC.**

LANDSCAPE ARCHITECTURE  
PLANNING • URBAN DESIGN

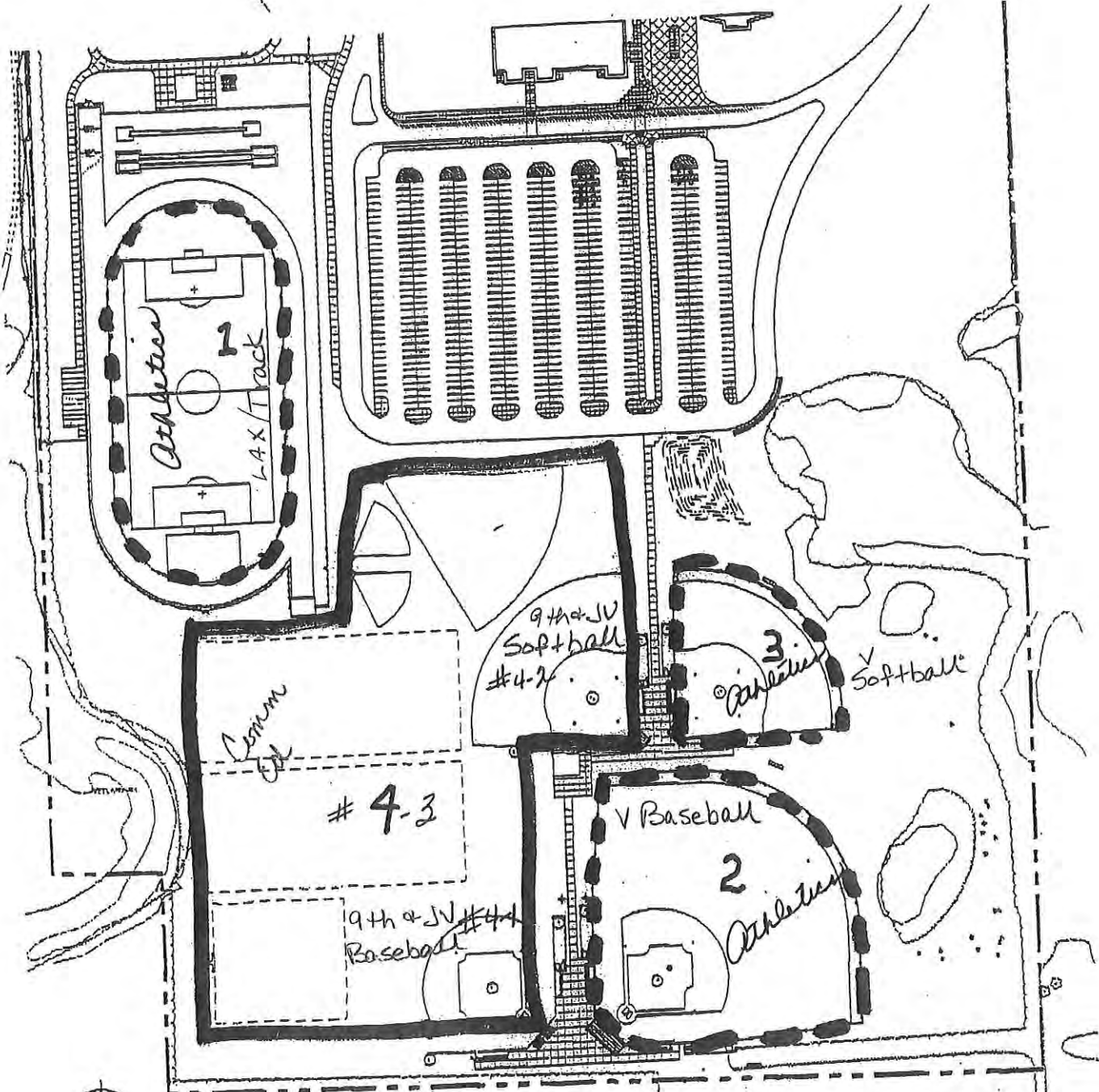
150 SOUTH FIFTH AVE.  
ANN ARBOR, MI. 48104  
734.668.7416  
734.668.2525 FAX

NOV 28 2007

## WALLED LAKE CENTRAL HIGH SCHOOL

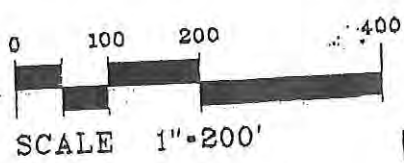
### COMPETITION ATHLETIC FIELDS

Practice Field 4



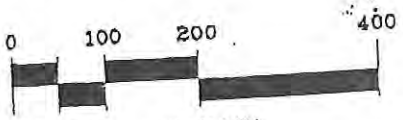
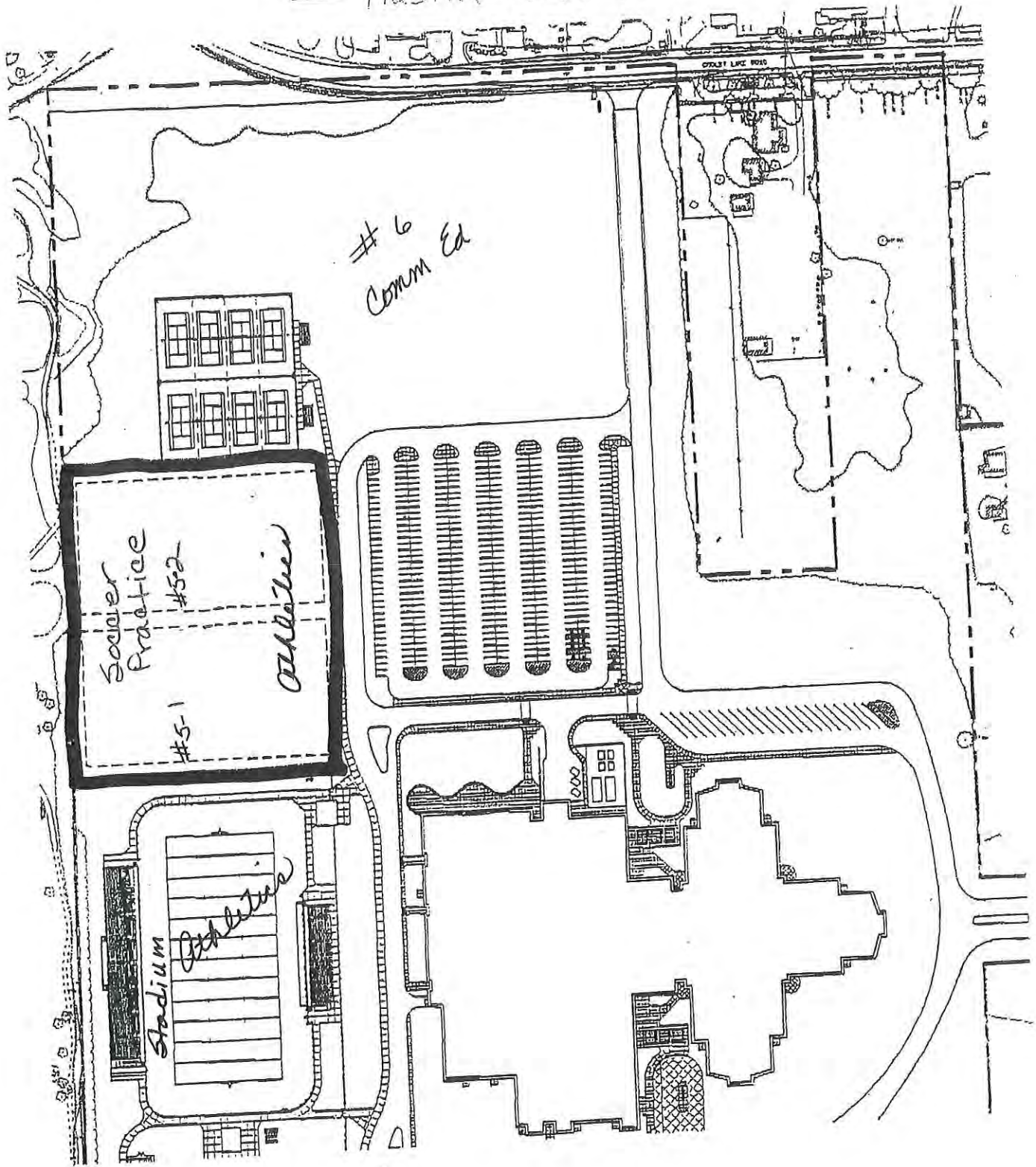
**Game Fields - 1, 2, 3**

**WALLED LAKE NORTHERN  
HIGH SCHOOL - South**



NOV 28 2007

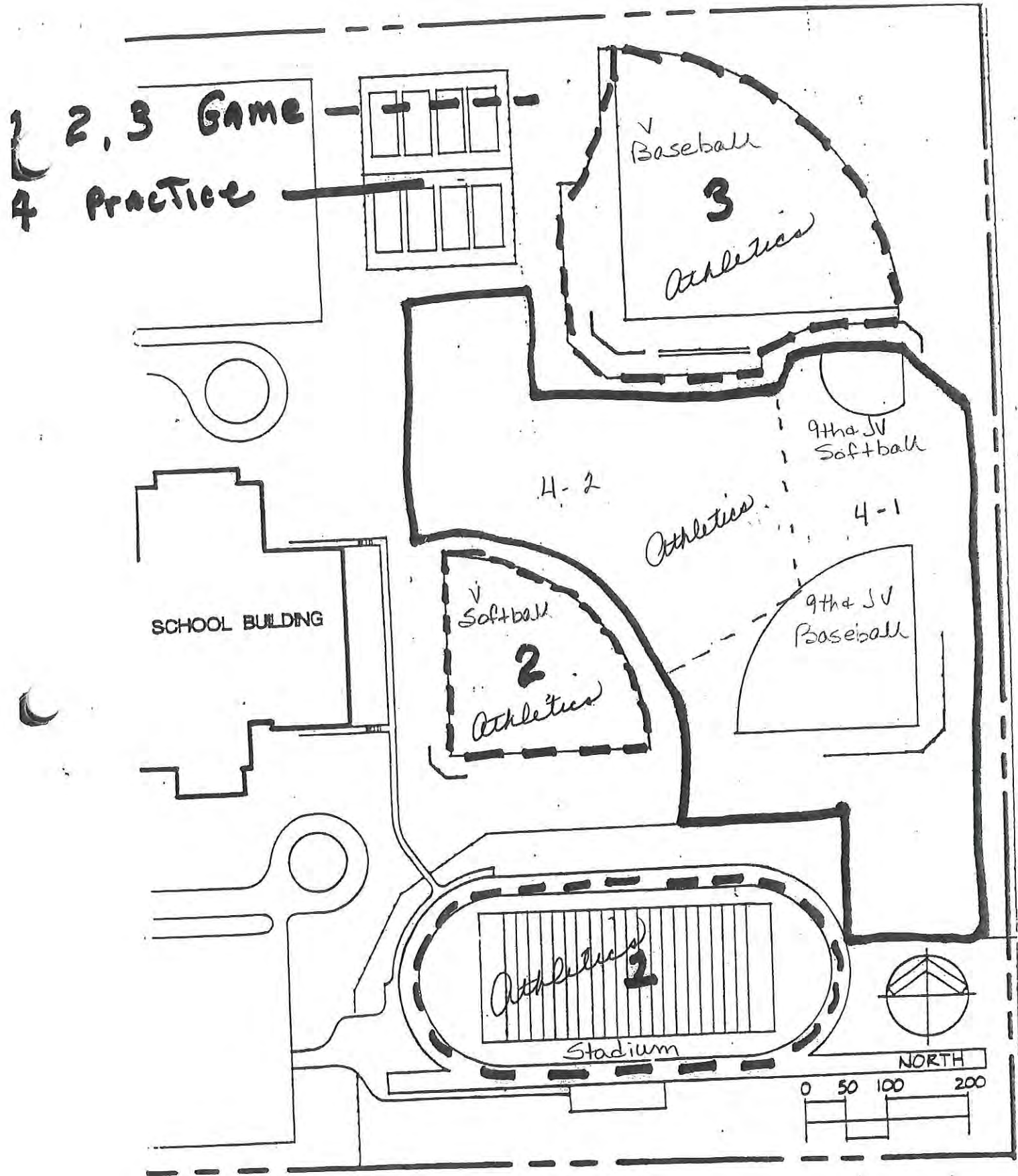
Practice Field 2



SCALE 1"=200'

# WALLED LAKE NORTHERN HIGH SCHOOL - North

NOV 28 2007



JOHNSON HILL  
AND ASSOCIATES, INC.  
LANDSCAPE ARCHITECTURE  
PLANNING • URBAN DESIGN  
150 SOUTH FIFTH AVE.  
ANN ARBOR, MI. 48104  
734.668.7416  
734.668.2525 FAX

# WALLED LAKE WESTERN HIGH SCHOOL

## COMPETITION ATHLETIC FIELDS

NOV 28 2007